

ORACLE VALIDATED INTEGRATION DATA SHEET

RevSoft REV SCHEDULER® Integration with JD Edwards EnterpriseOne 9.20

REV SCHEDULER is a True Enterprise Scheduling solution that runs on all your existing Servers - there are no additional servers or databases required..

COMPANY OVERVIEW

RevSoft creates Enterprise Automation solutions that run on your existing Servers and can communicate between Servers to provide Global Enterprise Automation Solutions.

INTEGRATION OVERVIEW

The validated integration between Rev Scheduler and Oracle's JD Edwards EnterpriseOne enables enterprises to submit JD Edwards EnterpriseOne batch jobs in a single step with fully encrypted passwords. Prior to submitting JD Edwards EnterpriseOne batch jobs, you can check for the existence of data to be processed to limit the running of unnecessary batch jobs. You can also review the content of PDF output from batch jobs for errors or warnings.

INTEGRATION DETAILS

The Rev Scheduler integration with JD Edwards EnterpriseOne simplifies the process of running batch jobs by:

- Using encrypted variables that do not expose passwords or any other secure strings.
- Running JD Edwards EnterpriseOne batch jobs on demand by only submitting the batch job if there is data for processing. For example, the batch job will only be submitted if there are approved GL batches waiting to be processed.
- Reading the batch job PDF output. In the GL Post example, Rev Scheduler will check for text stating 'One or more batches had errors.' If this text exists, Rev Scheduler can trigger alerts, send emails with the .pdf to on-call personnel, or execute other predetermined actions.
- Retrieving strings from the batch job PDF output. In the GL Post example, the solution can retrieve the batch number to be used in email subject lines or dashboard updates.



RevSoft
West Sand Lake Road
Orlando, FL 32819
USA
Tel.: +1.407.374.2222
revsoft.com

ORACLE Validated Integration JD Edwards EnterpriseOne

Oracle Validated Integration provides customers with confidence that a partner's integration with an on-premise Oracle application is functionally sound and performs as designed. This can help customers reduce deployment risk, lower total cost of ownership, and improve the user experience related to the partner's integrated offering.

Commented [SB1]: On the website, the product name is not all caps. So I made it match the way it looks on the company website.

Commented [JM2R1]: Web Site is being changed as Trademarked name is in caps REV SCHEDULER with the USPTO.

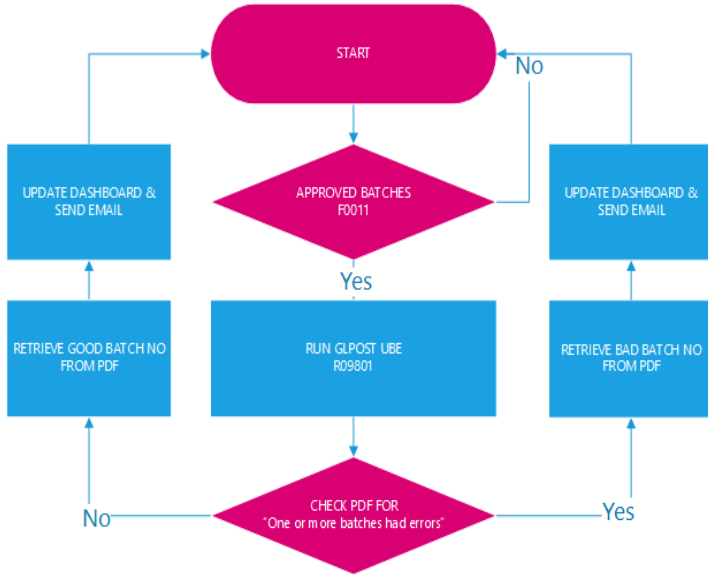


Figure 1. The GLPOST multi run incorporates processing for good and bad batches in a single, scheduled job in Rev Scheduler.

AVAILABILITY

ERP-One
 535 10th Avenue SW, Unit 303
 Calgary, AB T2R 0A8
 Canada
 Tel.: + 1.888.308.3771
 Email: info@wrp-one.com

RevSoft
 West Sand Lake Road
 Orlando, FL 32819
 USA
 Tel.: +1.407.374.2222
 revsoft.com

SUPPORT

ERP-One
 Tel.: +1.888.308.3771
 support.erp-one.com

RevSoft North America
 Tel.: +1.407.374.2222

RevSoft South Pacific
 Tel.: +61.7.5594.3300
 Email: support@revsoft.com

TECHNICAL DETAILS

Partner Environment	Oracle Environment
<ul style="list-style-type: none"> REV SCHEDULER Enterprise 10.3 MySQL 5.7.20 	<ul style="list-style-type: none"> Oracle's JD Edwards EnterpriseOne 9.2 64-bit Oracle Database 12c WebLogic Server 12c

ORACLE
 Validated Integration
 Oracle Applications

Copyright © 2022, Oracle and/or its affiliates. All rights reserved. This document is provided for information purposes only, and the contents hereof are subject to change without notice. This document is not warranted to be error-free, nor subject to any other warranties or conditions, whether expressed orally or implied in law, including implied warranties and conditions of merchantability or fitness for a particular purpose. We specifically disclaim any liability with respect to this document, and no contractual obligations are formed either directly or indirectly by this document. This document may not be reproduced or transmitted in any form or by any means, electronic or mechanical, for any purpose, without our prior written permission.

Oracle and Java are registered trademarks of Oracle and/or its affiliates. Other names may be trademarks of their respective owners. 0220

